

## Better Flotation with an ABP On Board

Some of the information on the ABP is related to the size of the boat -

- Boats less than 6 metres need to have either basic or level flotation indicated on the plate.
- Boats without flotation material or buoyancy compartments are no longer allowed.
- Boats more than 6 metres do not need a buoyancy statement.

### Basic Flotation

The boat will float in some orientation in the event of swamping or capsizing. This may allow you to cling onto the boat whilst awaiting help.\*



### Level Flotation

The boat will float in a level position if swamped. This will allow you to remain in the boat and possibly bail out the water whilst awaiting help.\*



\* These diagrams are illustrative only and apply in calm water.

### Remember

The information on the ABP helps you to safely operate your boat within its capabilities. If you modify the boat's design it may compromise the boat's flotation or other aspects essential to its safe operation.

### Need to Know More?

For further details contact your local marine agency or  
**National Marine Safety Committee**  
 Phone (02) 9247 2124 Fax (02) 9247 5203  
 PO Box R1871, Royal Exchange NSW 1225  
 Email: [secretariat@nmssc.gov.au](mailto:secretariat@nmssc.gov.au)  
 Website: [www.nmssc.gov.au](http://www.nmssc.gov.au)



# An ABP Makes Boating Safer



#### AUSTRALIAN BUILDERS PLATE

[Builder]  
[HIN or Build date]

Max = HP or kW

= kg

Max = kg

Max + + = kg

Buoyancy Flotation

Alteration of the boat's hull or permanent fittings may invalidate the particulars on this plate.

[Optional warning]

Information determined - [Standard used]

#### AUSTRALIAN BUILDERS PLATE

[Builder]  
[HIN or Build date]

Max persons  
Max load

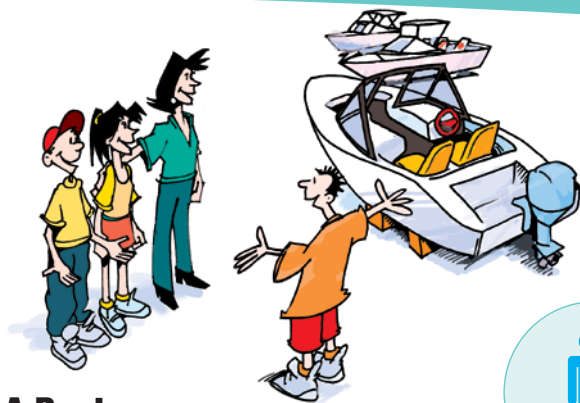
#### WAR

Alteration of the boat's hull may invalidate the particulars  
[Optional]

Information determined - [Standard used]

The Australian Builders Plate for Recreational Boats (ABP) gives you key safety information at a glance, whether you're buying a boat, going out boating, or taking a mate's boat out.

# An ABP Helps You to -



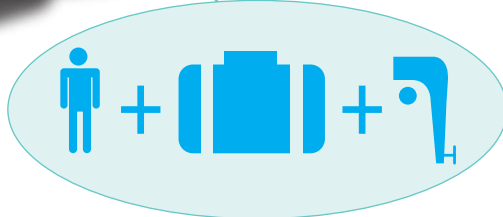
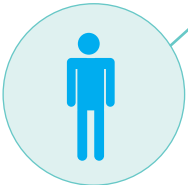
## Buy A Boat

The plate helps you to compare boats so you can buy one to best suit your needs. It also tells you how many people can safely fit on board.



## Choose an Outboard Motor

The ABP details a boat's maximum outboard engine power rating, so you can choose a motor that the boat can safely handle.



\* Sample ABP plate for a boat 6 metres or more, not designed to be powered by an outboard engine.



## ABPs for New Boats

Even though most new recreational boats will need an ABP, some boats, such as second hand boats, sailing boats and small personal watercraft are exempt from carrying an ABP. To help clarify things, here is a list of vessels that do not need an ABP

- aquatic toys
- amphibious vehicles
- paddle powered boats such as a canoe, kayak or surf ski
- hydrofoils or hovercraft
- pedal powered boats
- personal watercraft carrying no more than two people
- racing boats
- rowing shells used for racing or rowing training
- sailboards
- sailing boats
- submersibles
- second hand boats
- surf row boats.

\* Sample ABP plate for a boat less than 6 metres designed to be powered by an outboard engine using text and symbols.

## Avoid Overloading

You don't need to rely on guesswork when planning your trip, as the ABP tells you the maximum load that the boat can carry when out on the water. Maximum load includes: the weight of people; outboard engines; and carry on equipment such as safety gear, eskies, fishing tackle, spare parts, portable tanks etc.